

www.ctrivedi.com



WEBMATE



Converting & Flexible Packaging Machinery

A1/16, G.I.D.C. Estate, Phase-II, Vatva, Ahmedabad 328 445 Gujarat (INDIA)
+91-79-4008 3551/52/53 +91-79-4008 3554
info@ctrivedi.com, ctrivedi@ctrivedi.com www.ctrivedi.com



Scan for website

LAMINATION MACHINE (SOLVENTLESS)

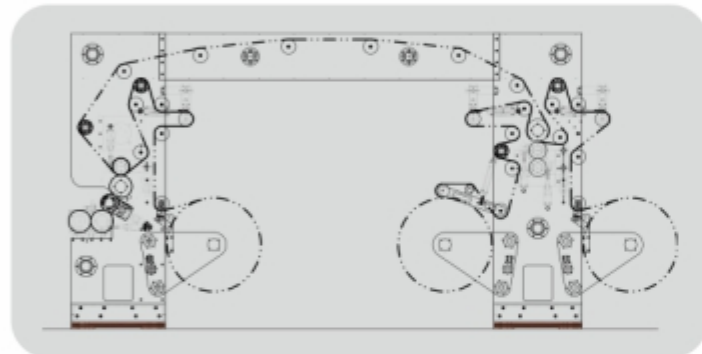
C. Trivedi has developed special type import substituted Solventless machine to getting optimum quality of coating evenness with in cooperate with world class equipment, sophisticated tension control system to get high quality of coating at high speed to get maximum production. at reasonable price and also it take care of large quantity of laminates in non-messy & organized manner

SALIENT FEATURES

- Heavy Duty M.S. Structure
- Individual foundation base
- Imported Heating System
- Dosing Pump
- 5 Roll Coating System
- Ultrasonic Web guide system
- Individual Exhaust at both end

TECHNICAL SPECIFICATION

- Web width : 800mm /1000mm/1200mm
- Unwind Rewind Dia : 800-1000mm
- Machine Speed : 300/350 MPM
- Material to be laminated



Layout of Solventless Lamination Machine – Webmate-SL



WEBMATE-SL

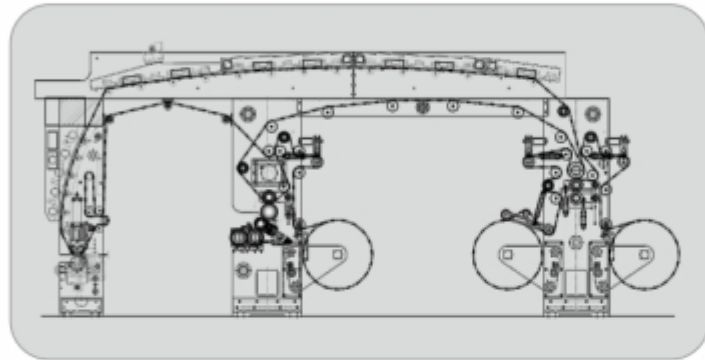
TECHNICAL SPECIFICATION

SPECIFICATION	SOLVENTLESS-ECO	SOLVENTLESS-STD	SOLVENTLESS-HIGH END
Material	Polyester, Film, Foil, BOPP / LD / LLDP / Paper		
Working Width	up to 1200mm		
Heating System Water / Oil	2 Nos.	2 Nos.	3 Nos.
Dosing Pump	INDIAN	INDIAN	INDIA / IMPORTED
Drive	Digital AC	Digital AC/Servo	Digital Servo
Motor	AC Motor	AC/Servo	Servo Motor
Unwind	Pneu. Brake	AC Motor	Servo Motor
Pneumatic	INDIAN	FESTO	FESTO
Dust Guard	Manual	Manual	Manual / Pneumatic

C. Trivedi has developed special type import substituted Solventless Machine with new development of Combi with zero change over facility of job. This machine is not only run Solventless at high speed but newly design to get even Solvent base Lamination at reasonably good speed.

SALIENT FEATURES

- Heavy Duty M.S. Structure
- Individual Foundation base
- Imported Heating System
- 5 Roll Coating System
- Ultrasonic Web guide system
- Individual Exhaust at both end
- Separate coating station for Solvent base
- Separate drying chamber for Solvent base
- Separate exhaust system for solvent base
- Separate motor for solvent base
- Separate web path for both material
- Sophisticated drying chamber for solvent base with minimum drying chamber length
- Pneumatic lifting for dryer
- Catwalk arrangement for web threading of solvent base
- Facility to separate both machine in future if want to run both the machine individually.



Layout of Solventless Lamination Machine – Webmate-SL Combi

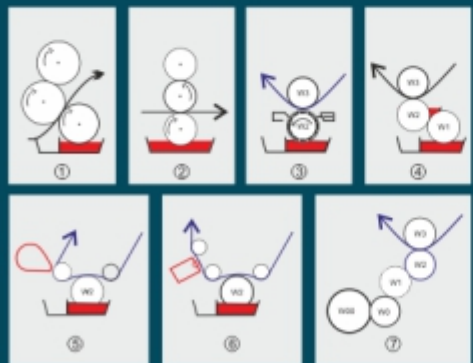
DIFFERENT TYPE OF COATING MACHINE AVAILABLE

- D.G. Lacquer Coating / STP Coating / VMCH Coating
- May bar/ Reverse roll, Air knife Three roll

OPTIONAL

Registered window metalizing Lamination for both web.
Wet Lamination attachment on coating head.
Machine can extend with VMCH coating & Dryer.

Example of Coating Methods



- Top NIP Fed Three Roll Reverse Roll Coater
- Gravure Reverse Roll Coater
- Gravure roll coating with oscillating doctor blade
- Reverse roll coating with nip feed
- Kiss coating with air knife
- Kiss coating with Mayer bar
- Five Roll (Smooth) Coating

TECHNICAL SPECIFICATION

SPECIFICATION	COMBI SOLVENTLESS
Material	Polyester, Film, Foil, BOPP, / LD / LLDP / Paper
Working Width	Up to 1200mm
Heating System water / oil	2 / 3 Nos.
Dosing Pump	INDIAN / IMPORTED
Drive	Digital AC / Servo
Motor	AC / Servo Motor
Unwind	Pneumatic Brake / AC / Servo Motor
Heating System for Dryer (Solvent base)	Hot Air Generator / Electric Heating

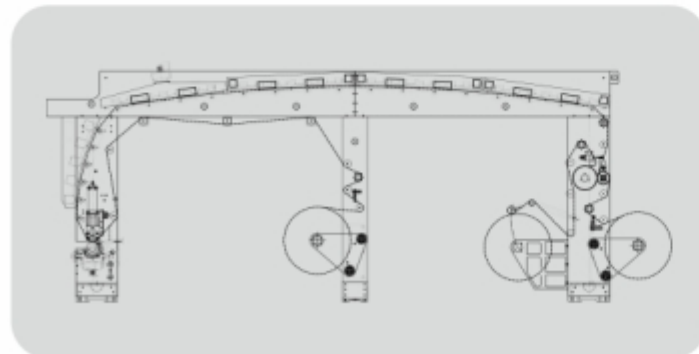


LAMINATION MACHINE (SOLVENT BASE)

C. Trivedi Present the ultimate New Invention of Solvent base lamination Machine – Webmate, which is easy to handle, install and operate and fit in small place it takes care of Quality of Laminated Material.

SALIENT FEATURES

- Heavy duty C.I. Cast iron and Heavy fabricated structure
- Gravure type coating system
- Fully insulated imported special glass wool sheet fitted in the panel (Top side & Bottom) for controlling heat loss
- One & One Slit type counter air flow arrangement, divided equally are placed against roller for proper web support
- Exhaust are distributed through-out the length of drying chamber & individual exhaust duct for each zone
- Digital Temperature controller with indicator & PT 100 sensor for each zone



Solventbase Lamination Web Layout

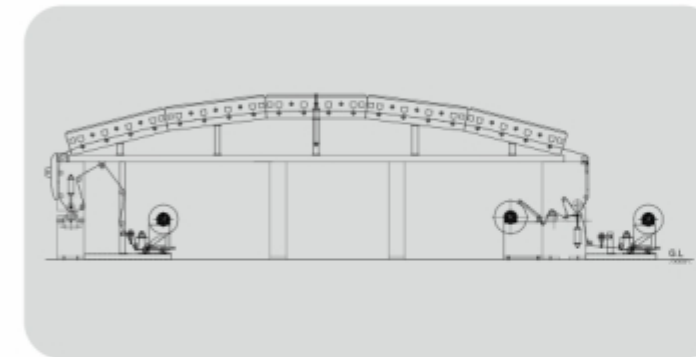
OPTIONAL ATTACHMENT

- Air Shaft
- Pull Roll assembly (Infeed Drive)
- May bar/Reverse roll, Air Knife three roll
- Wet Lamination Arrangement
- Chill Roll
- Ink Circulating with Viscosity Control

WEBMATE-SB

TECHNICAL SPECIFICATIONS

SPECIFICATION	HIGH SPEED	ECONOMY
Web width	400 to 2400mm	400 to 2400mm
Machine Speed	200 MPM	150 MPM
Heat Source	Electric Heater & Blower/Hot Air (Diesel/Gas/wooden/Pallet fired) Thermic Fluid System	Electric Heater & Blower/Hot Air (Diesel/Gas/wooden/Pallet fired) Thermic Fluid System
Drive & Tension Control	5 Drive	3 Drive / Pneumatic Brake
Nip Heating	Oil Fired	Electrical
Unwind & Rewind	Shafted / Shaft less	Shafted / Shaft less



Solvantbase Lamination Eco Model

